

136. ethoxypropane

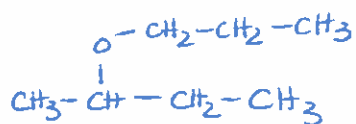
137. 2-ethoxypropane 

138. ethoxycyclohexane

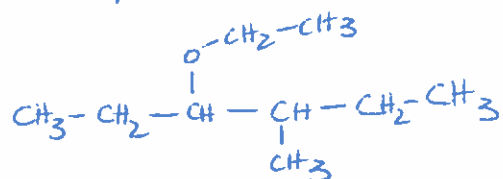
139. methoxyethane



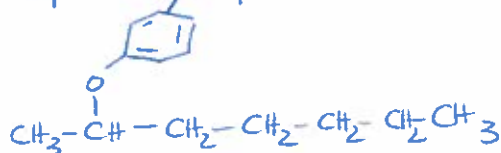
140. 2-propoxybutane



141. 3-ethoxy-4-methylhexane



142. 2-phenoxyheptane

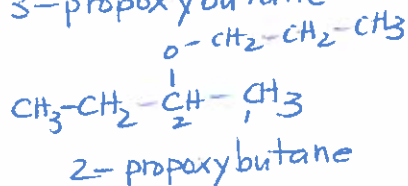


143. ethoxymethane

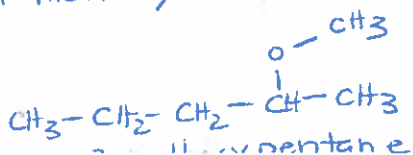


↑ longer chain is the parent
methoxy ethane

144. 3-propoxybutane



145. 4-methoxy-4-methylbutane



146. 2-ethoxybenzene



Amines PP 147-158 Pg. 74

147. ethanamine

148. pentan-3-amine

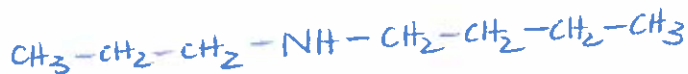
149. N-ethylbutan-2-amine

150. N-methyl-N-propylhexan-2-amine

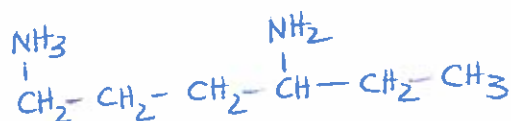
151. methanamine



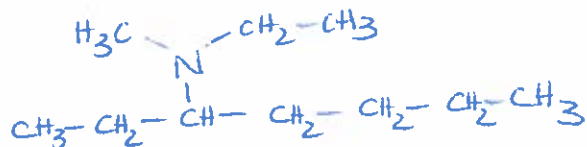
152. N-propylbutan-1-amine



153. hexan-1,4-diamine



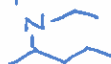
154. N-ethyl-N-methylheptan-3-amine



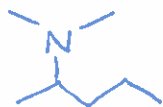
155. propan-1-amine



156. N-ethyl-pentan-2-amine



157. N,N-dimethylbutan-2-amine

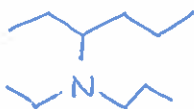


167. propanamide

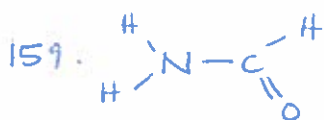
168. N-propyl-2,2-dimethylbutanamide

169. N,N-dimethyl-2-propylhexanamide

158. N-ethyl-N-propylhexan-3-amine



Amide PP #159-169 pg. 79



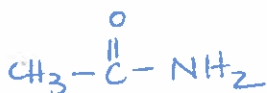
methanamide

160. 3-ethylhexanamide

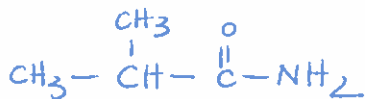
161. N-propylpentanamide

162. N,N-dimethylbutanamide

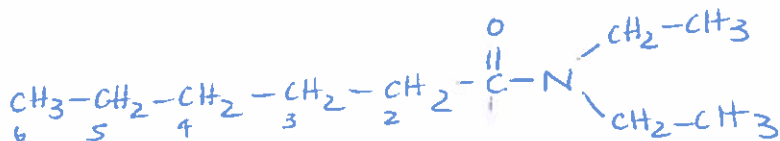
163. ethanamide



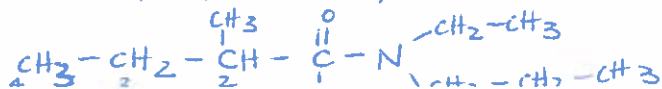
164. 2-methylpropanamide

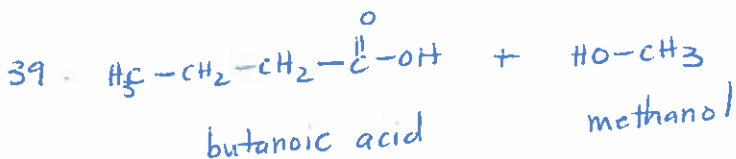
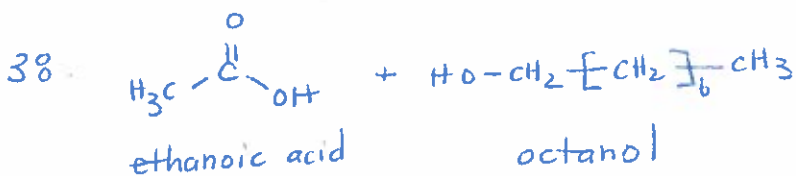
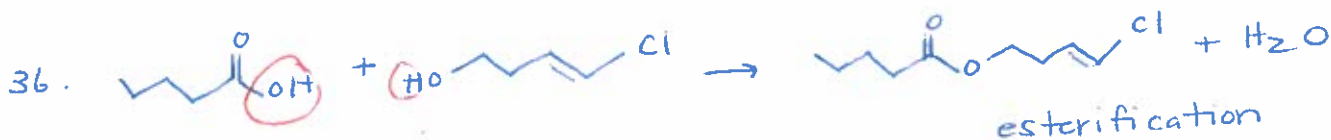
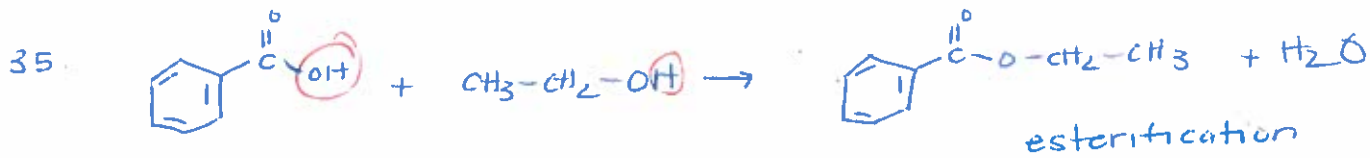
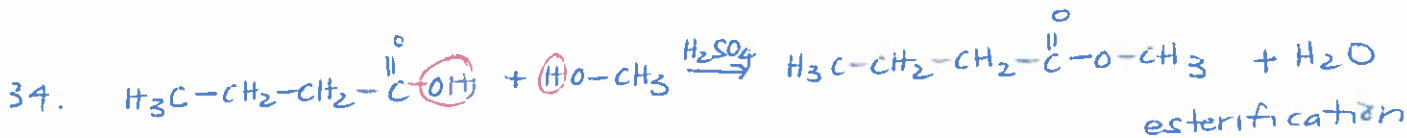
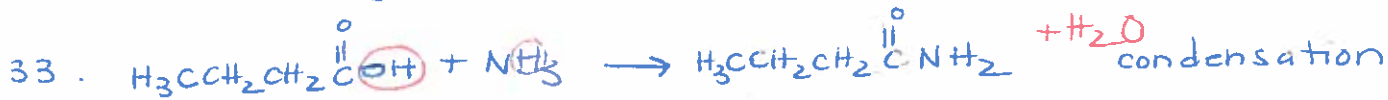


165. N,N-diethylhexanamide

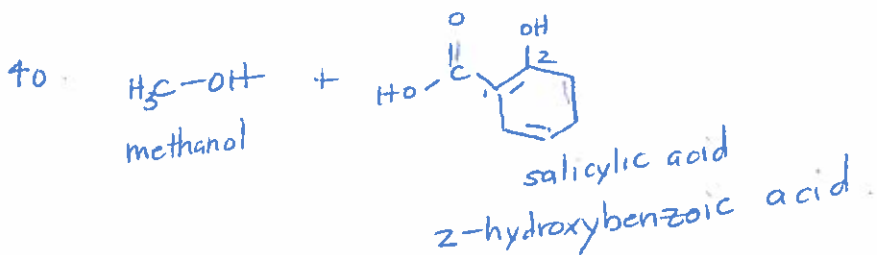


166. N-ethyl-N-propyl-2-methylbutanamide

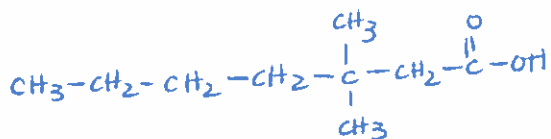
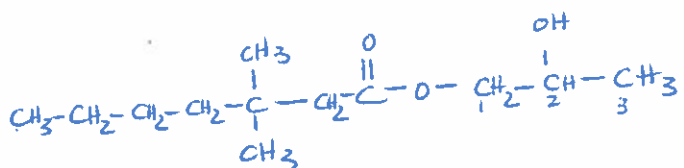
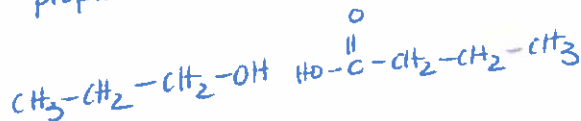




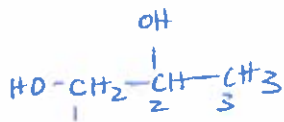
42. propyl butanoate



propanol butanoic acid



3,3-dimethylheptanoic acid



propan-1,2-diol

